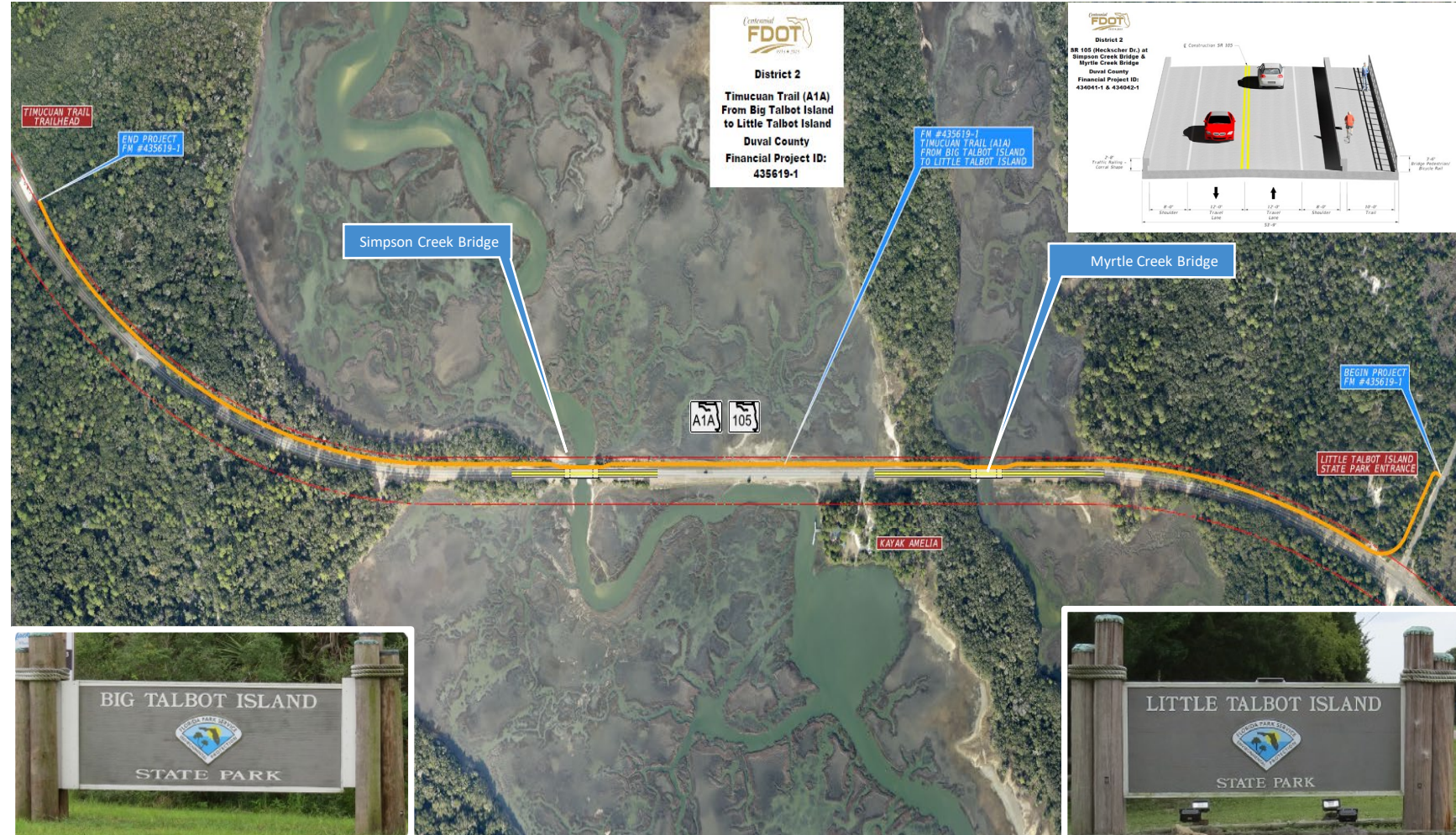


SR A1A (Heckscher Drive) Timucuan Trail Project

Project Team:



Scope:

- Design-Bid-Build
- 1.7 Mile Multi-Modal Trail
- Reconstruct and Widen
 - Simpson Creek Bridge
 - Myrtle Creek Bridge
- August 2020 – December 2023
- Construction Cost: \$12 Million

Enhanced Functionality, Mobility & Safety:


- Replaced 2 Structurally Deficient and Scour Critical Bridges
- Added Shoulders to the Bridges
- Separated Bicyclist/Pedestrians from Traffic with Shoulder Barrier Wall
- Connected Gap in the SUN Trail Network
- Provides Reliability and Future Resiliency
 - Hurricane Evacuation Route
 - Commuter Corridor
 - Scenic Roadway with Trail



MOT & Public Involvement:

- 2-Way, 1-Lane Traffic with Temp Signals for 2 ½ Years
- Red Time Extenders / Added CCTV Video Detection
- Flyers for Bicyclists and Kayakers
- Florida State Parks
- Facilitated Special Events
 - Endless Summer Watermelon Ride







Simpson Creek Bridge Replacement
Project on Heckscher Drive
(State Road A1A)
FIN # 4340411

ATTENTION BICYCLISTS:

Heckscher Drive has been reduced to one lane over Simpson Creek Bridge and through the construction zone.





PLEASE WAIT IN THE BICYCLE DETECTION ZONE TO BE DETECTED

- Video detection has been installed at the temporary traffic signals to allow bicyclists enough time to travel safely through the 1,425 foot construction zone.
- Please wait in or ride through the marked Bicycle Detection Zone box (shown above) to be detected.
- Bicyclists should quickly ride through the work zone at a minimum of 10mph once detected.
- Bicyclists can ride with cars or after the last car passes. Bicyclists should always travel in the same direction as the cars.

Project Information:

Start: November 2021
Finish: Spring 2023
Cost: \$3 million
Contractor: Superior Construction
Public Information Contact:
Debbie Delgado, 904-475-7138
NFLroads.com



Minimization of Environmental Impacts:

- Multiple Permits due to Wetlands
- Severe Tidal Changes and Hurricanes
- Timucuan Ecological & Historical Preserve
- Prehistoric Archaeological Site 8DU00080
 - Minimized Ground Disturbance
 - Archaeological Monitoring (SEARCH)
 - Shell Midden
 - 15 Ceramic Pottery Artifact Fragments

