

SR 15 (US 17) 4-LANING OVER DUNNS CREEK

FDOT Project Manager: Taylor Byrd, P.E.

EOR: Jacobs - Randall Mock, P.E.

CEI: ETM - Rob Hansgen, P.E, Tim Thacker,
Robert Mullin, Alexa Sampsel, P.E.

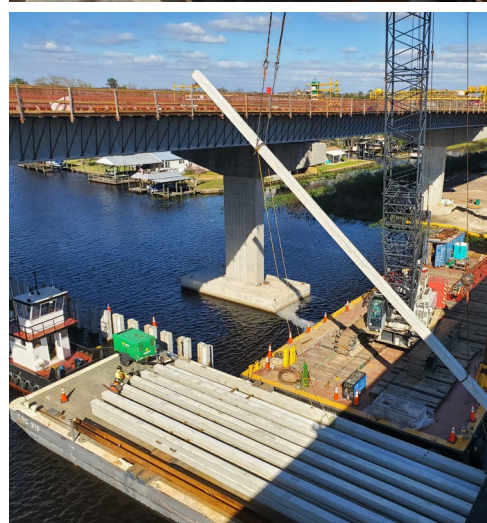
BRIDGE STRUCTURE HIGHLIGHTS

- 2,808'-Long New Bridge
- 18 Spans Utilizing 156'-long 78" FIB
- 45' Vertical Clearance;
60' Channel Clearance
- Mass Concrete for Nearly
all Substructure Elements
- 24" Concrete Pile Foundations

SPECIAL PROJECT HIGHLIGHTS

- 12' and 10'-Wide Shared-Use Path
- Column Supported Embankment with
Load Transform Platform
- Geosynthetic Reinforced Embankment

BRIDGE CONSTRUCTION PROGRESS PHOTOS



COLUMN SUPPORT EMBANKMENT / GEOREINFORCED EMBANKMENT

